

# DWM D9TH2-1010

## Specifications

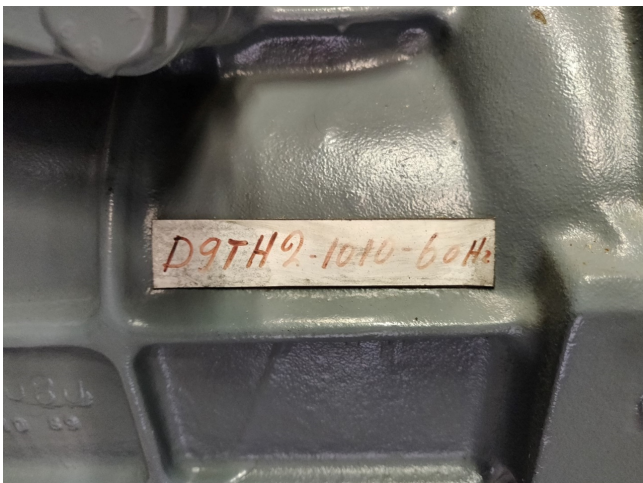
Marque	DWM
Le type	D9TH2-1010
Réfrigérant	Freon
kW at -30°C/+40°C	9.35
kW at -40°C/+40°C	5.91
kW at -45°C/+40°C	4.61
m3 / h	stage I = 33 m3h // stage II = 16.5 m3/h
Remarques	Our capacity table is based on Manufacturer spec. We would like to know which refrigerant is in your system
Stock	1



## Description

### Used DWM D9TH2-1010

Used DWM - Copeland D9TH-1010 Semi-hermetic piston two stage compressor.  
 \*Why choose for HOSBV? Were not only the largest used refrigeration specialist in Europe, but also, we deliver all equipment including an extensive test, warranty and industrial cleaning.  
 \*Optional we can also perform a new paint job and arrange the logistics.



## Cooling capacity [kW]

$t_c \setminus t_e$	-50	-45	-40	-35	-30
30	3.65	4.80	6.20	7.90	9.92
35	3.60	4.70	6.06	7.69	9.63
40	3.55	4.61	5.91	7.48	9.35
45	3.48	4.50	5.74	7.25	9.04
50	3.36	4.34	5.53	6.96	8.68
55	3.18	4.11	5.25	6.61	8.25

## Power input [kW]

$t_c \setminus t_e$	-50	-45	-40	-35	-30
30	3.74	4.26	4.82	5.43	6.08
35	4.04	4.58	5.18	5.83	6.53
40	4.36	4.93	5.57	6.26	7.01
45	4.68	5.29	5.96	6.70	7.51
50	5.00	5.64	6.35	7.14	8.00
55	5.30	5.97	6.73	7.56	8.48